

VentMaster V5 Revit Plug-In

Installation guide



This guide describes how to install and to start working with the VentMaster add-in tool for Revit.

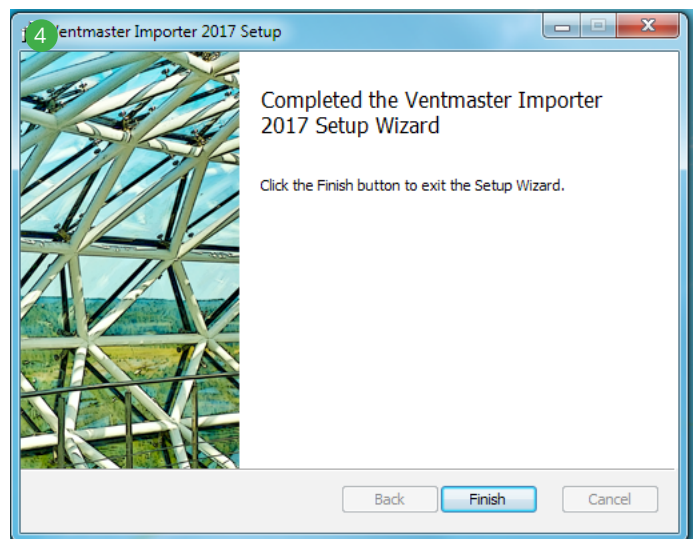
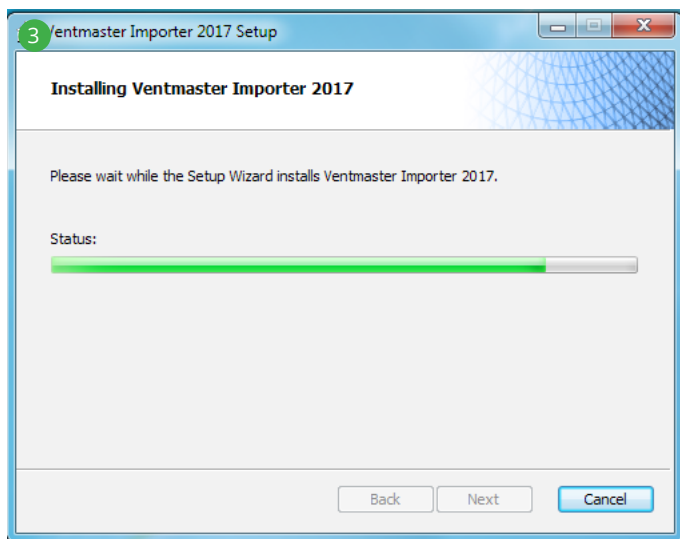
VentMaster V5 Revit Plug-In is a tool that allows Autodesk Revit users to insert Air Handling Units (Exhaust AHU, Supply AHU, Heat recovery AHU and AHU with heat recovery coil) after their selection in the main AHU selection software. Software automatically creates Air Handling Units and imports all the necessary design information into Autodesk Revit. All needed parameters are visible for regular Autodesk Revit users. Software allows users to update the families after changes have been made in the model.

The main functions:

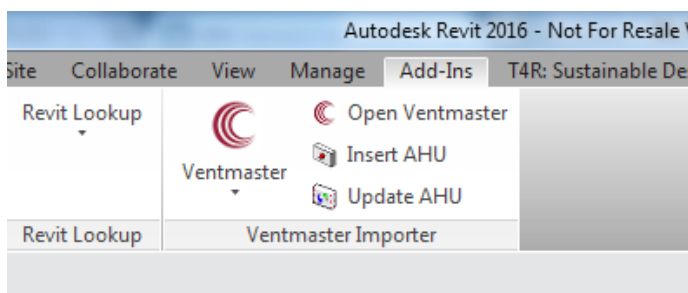
- › Choose AHU in VentMaster V5 software;
- › Export AHU to Autodesk Revit;
- › Insert AHU to Autodesk Revit;
- › Update AHU according to the newest changes.

INSTALLATION STEP-BY-STEP

1. Download VentMaster from "Salda" download page http://www.salda.lt/en/products/category/download_page/ and install it (skip this step if you already have VentMaster).
2. Download VentMaster V5 Revit Plug-In from "Salda" download page http://www.salda.lt/en/products/category/download_page/ and open it.

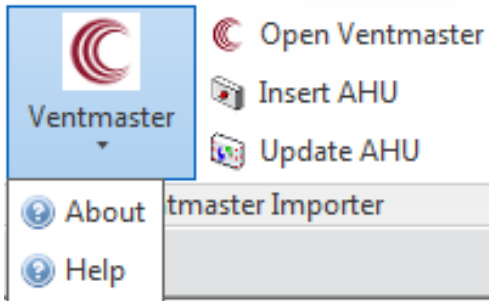


3. Restart Revit.
4. After installation VentMaster Importer will appear on your Revit toolbar (Menu/Add-Ins).



WORKING WITH VENTMASTER V5 REVIT PLUG-IN

1. VentMaster V5 Revit Plug-In has 3 main features – Open Ventmaster, Insert AHU, Update AHU, as well as Help and About buttons.

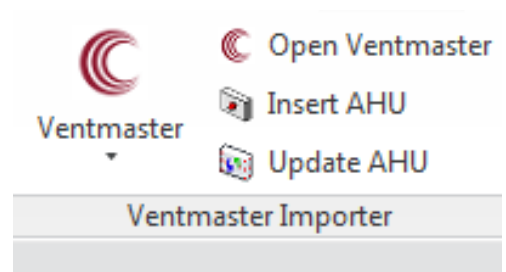


Short description:

- › Open Ventmaster – opens main software to select needed AHU;
- › Insert AHU – Inserts Revit families selected in VentMaster software;
- › Update AHU – Updates AHU according to the newest changes in the project;
- › About – Information about the add-in;
- › Help – Help page of VentMaster V5 Revit Plug-In.

2. Open VentMaster

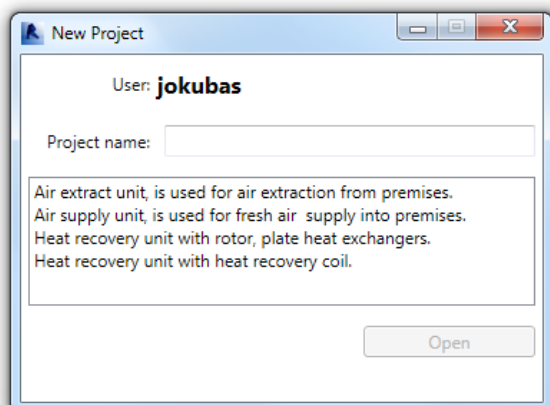
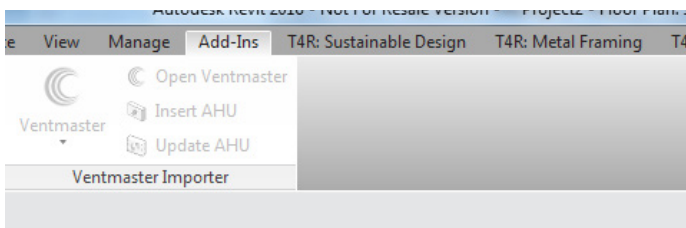
- › To get started with VentMaster importer you should Open VentMaster;
- › You can find VentMaster in your Revit ribbon under the Add-Ins tab;
- › By clicking „Open Ventmaster“ you will be redirected to VentMaster software.



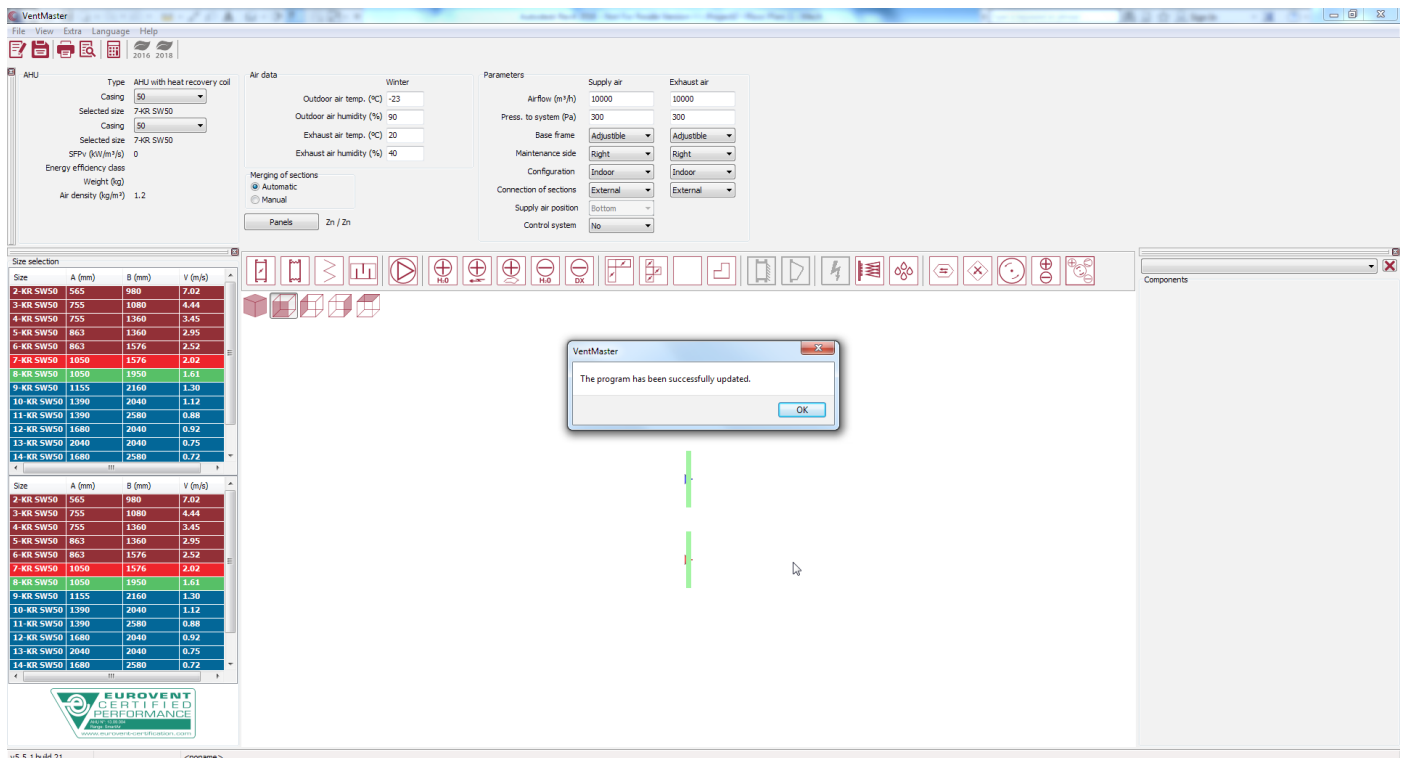
2.1. While opening Ventmaster the New Project window will pop-up. Here user have to enter Project Name and choose Air Handling Unit's type from the following:

- › Air extract unit, which is used for air extraction from premises;
- › Air supply unit, which is used for fresh air supply into premises;
- › Heat Recovery unit with rotor, plate heat exchangers;
- › Heat recovery unit with heat recovery coil.

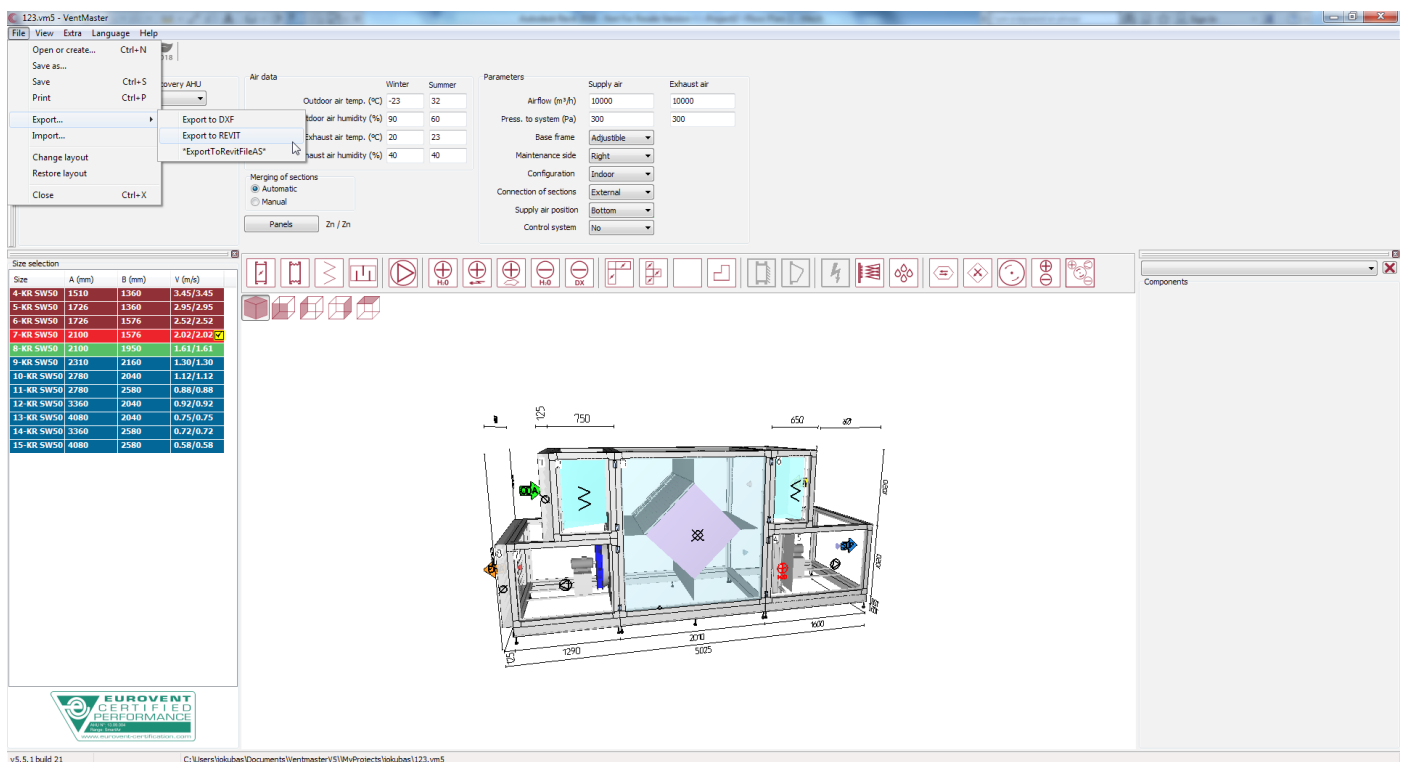
After everything is set – Open Vent Master software using „Open“ button.



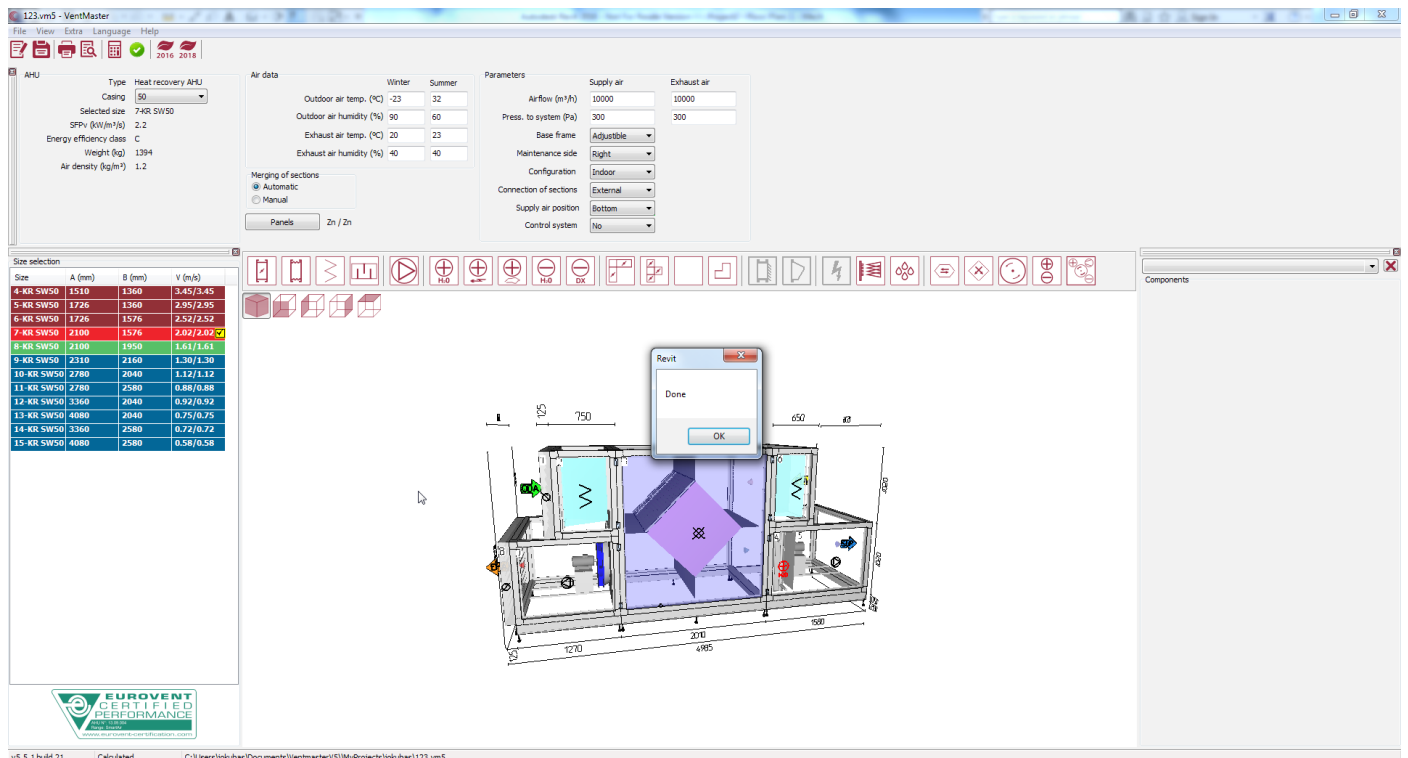
2.2. After this step VentMaster opens. And you can start modeling air handling unit.



When you have finished modeling by VentMaster, export unit to Revit (Menu/File/Export.../Export to REVIT).

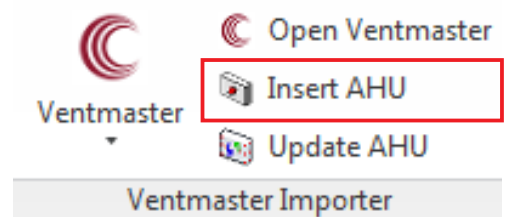


After export is finished message appears on VentMaster

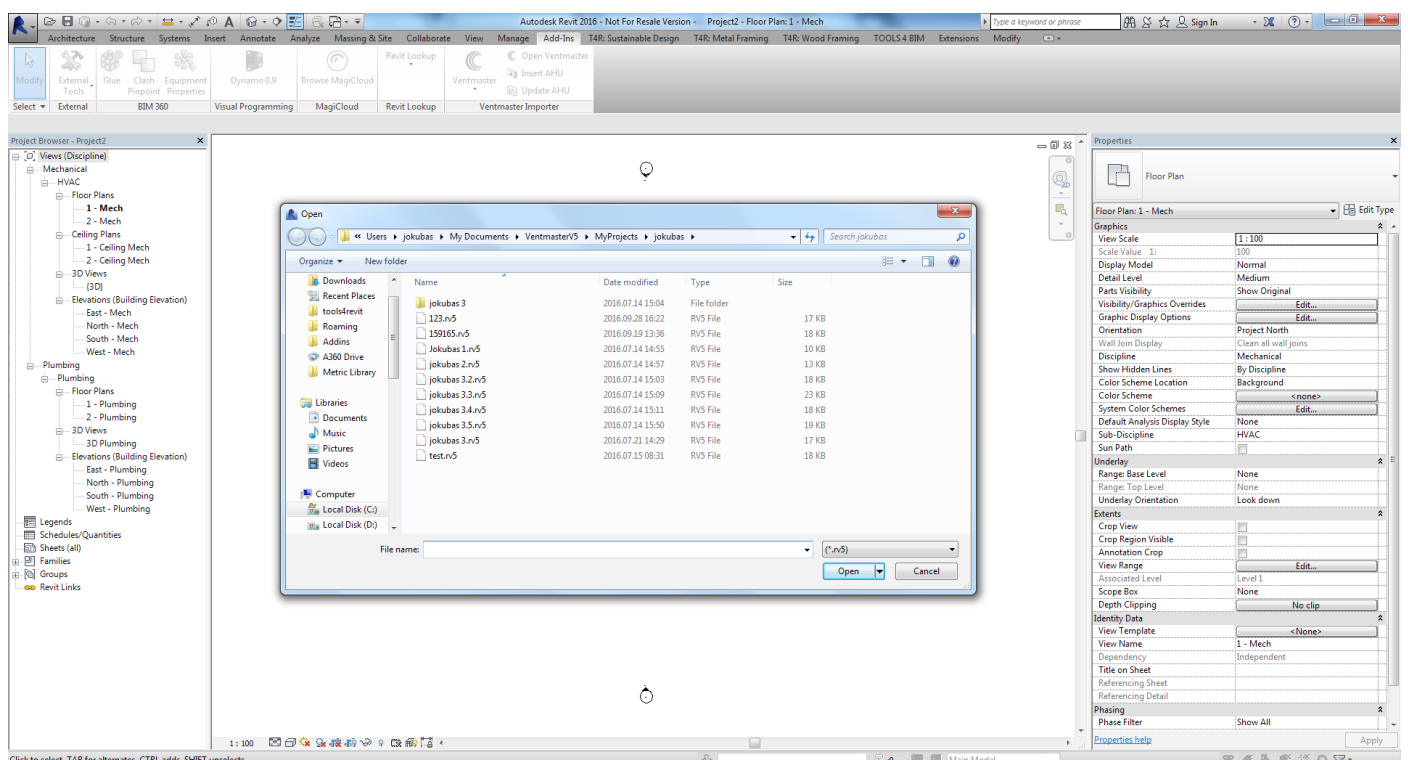


3. Insert AHU

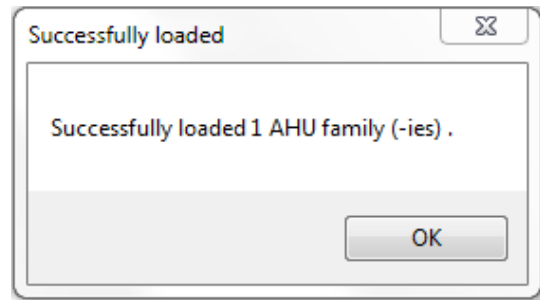
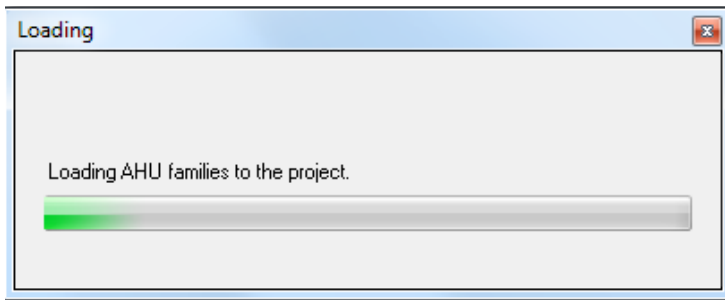
3.1. After AHU is created and exported from VentMaster software users can insert needed elements.



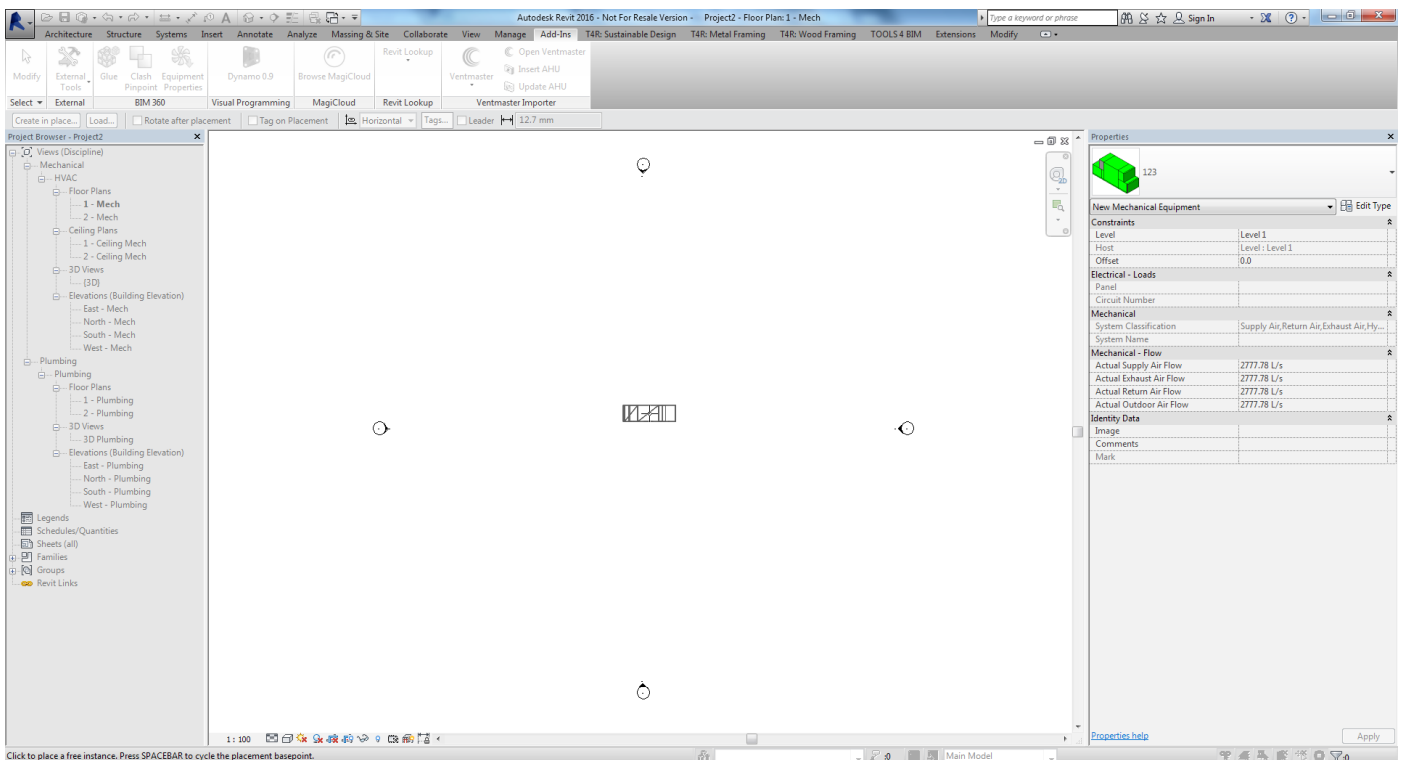
3.2. Use „Insert AHU“ to load exported families. Tool will open a folder where all projects will be stored. Please choose file type RV5 File.



3.3. After you will choose the file, your needed the families will be loaded into the project.



3.4. You will see your AHU in Revit once you insert the file.



This AHU has all needed parameters to design ventilation systems. Some of the parameters are Instance, some of them are Type.

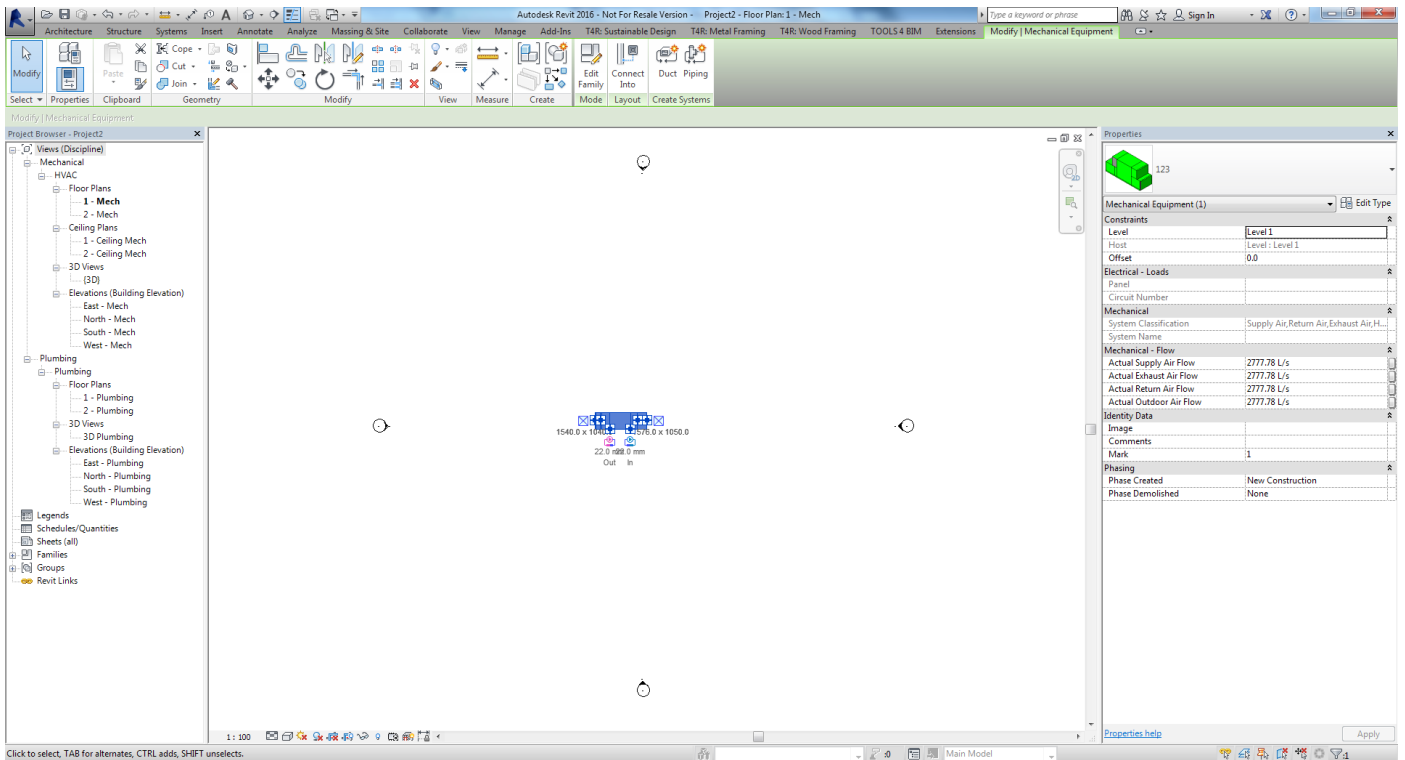
Type parameters



Parameter	Value
Electrical Engineering	
Total Current	12.42 A
Electrical - Loads	
Total Power	5150.00 W
Mechanical	
AHU Sound Generation dB	58 64 50 48 49 45 31 24 54
Exhaust Outlet Sound Generation dB	66 80 72 81 77 69 59 54 81
Outdoor Outlet Sound Generation dB	56 69 60 63 57 44 32 27 63
Return Outlet Sound Generation dB	58 72 63 68 62 54 41 37 67
Supply Outlet Sound Generation dB	66 80 72 81 78 69 60 54 81
Mechanical - Flow	
AHU Supply Air Flow	2777.78 L/s
AHU Exhaust Air Flow	2777.78 L/s
AHU Supply Static Pressure	394.00 Pa
AHU Exhaust Static Pressure	383.00 Pa
Actual Supply Pressure Drop	300.00 Pa
Actual Exhaust Pressure Drop	300.00 Pa
Actual Return Pressure Drop	300.00 Pa
Actual Outdoor Pressure Drop	300.00 Pa

Instance parameters

Mechanical Equipment (1)	
Constraints	
Level	Level 1
Host	Level : Level 1
Offset	0.0
Electrical - Loads	
Panel	
Circuit Number	
Mechanical	
System Classification	Supply Air, Return Air, Exhaust ...
System Name	
Mechanical - Flow	
Actual Supply Air Flow	2777.78 L/s
Actual Exhaust Air Flow	2777.78 L/s
Actual Return Air Flow	2777.78 L/s
Actual Outdoor Air Flow	2777.78 L/s



4. Update AHU

If any adjustments will be made during the design process, users can use Update AHU functionality, which will lead users back to VentMaster software.

- › Make any changes in your VentMaster project;
- › Export to Revit using the same Export feature as described before;

4.1. Select AHU you want to update.

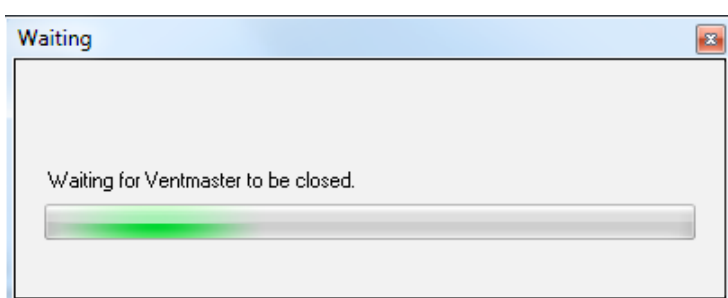
4.2. Select Update AHU on the Ventmaster Importer.



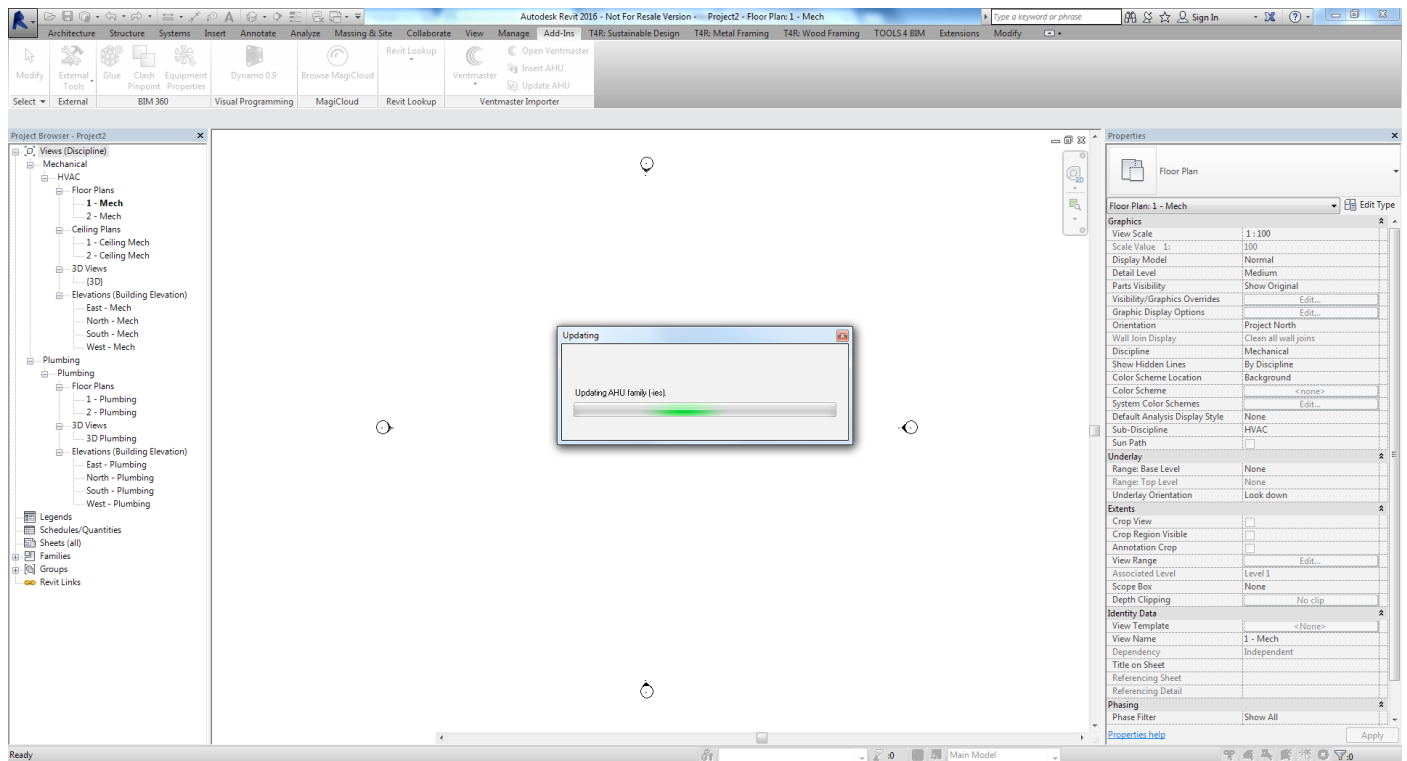
4.3. Make required modifications on the VentMaster and Export the unit(see article 2.2)

4.4. Close the VentMaster.

When you see the window that says „Waiting for Ventmaster to be closed“ - close VentMaster software.



4.5. Updating message will appear on Revit



Thank you for choosing our products.